

How to run Splus

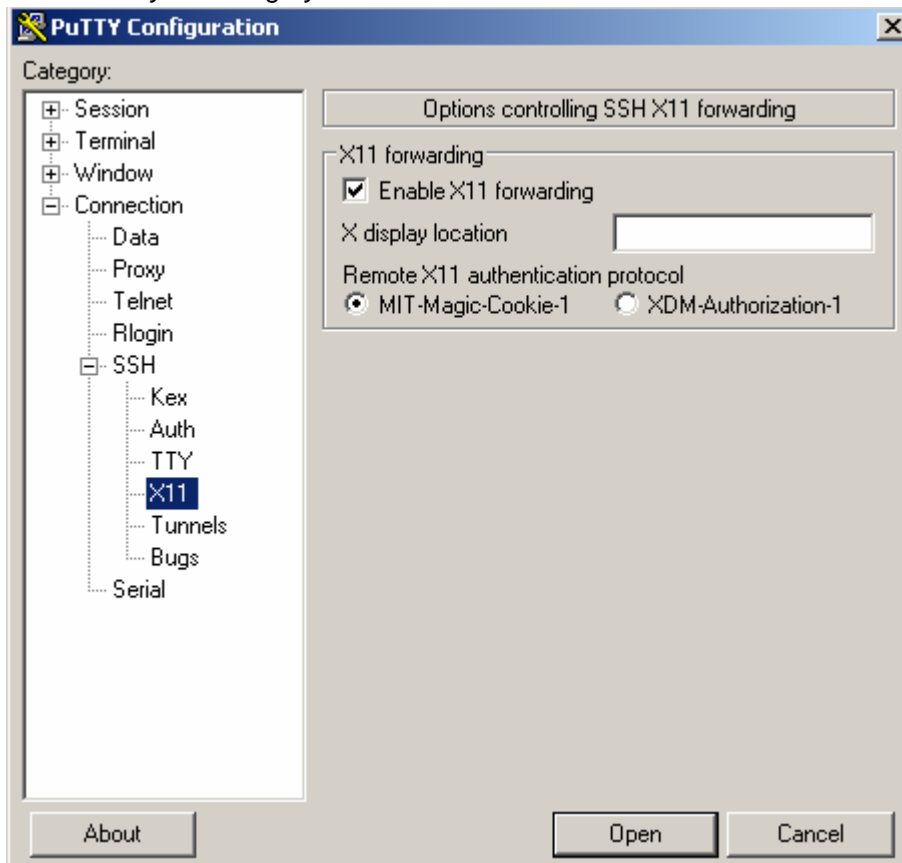
The Splus application may be run from the lab or a remote site (home/office). You must have the following software installed on your system to access the application:

1. Putty - <http://www.putty.org/>
2. FTP client - <http://www.coreftp.com/> (to put data on the server)

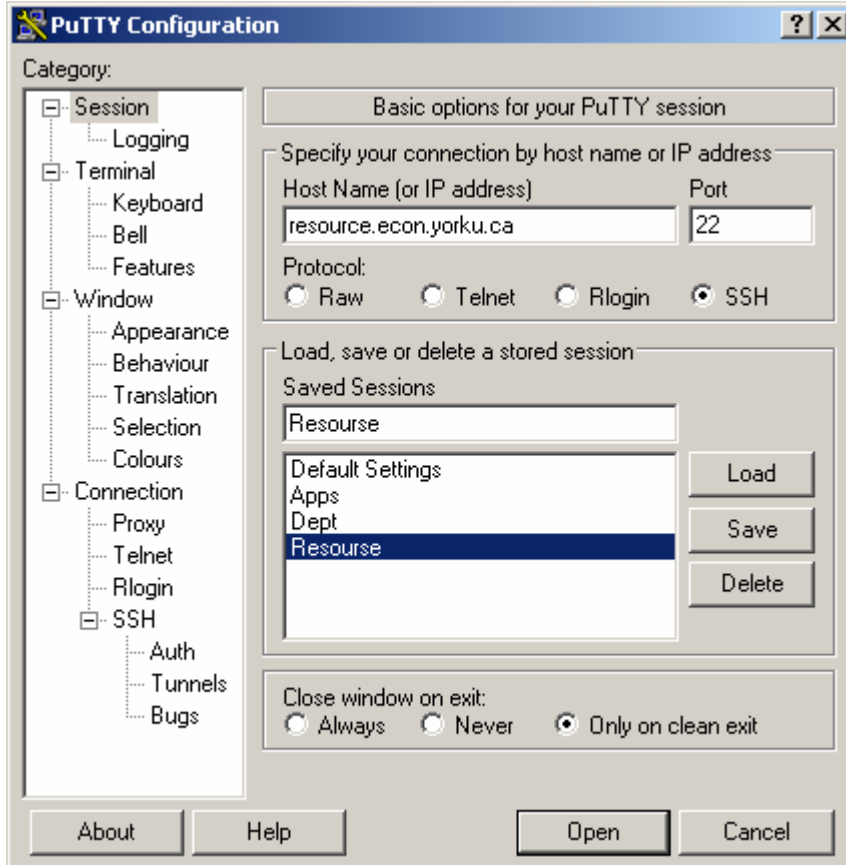
Once you have installed the above software proceed to the following:

1. Launch **Putty** and enable X11 forwarding by check marking Enable X11 forwarding under X11 options.

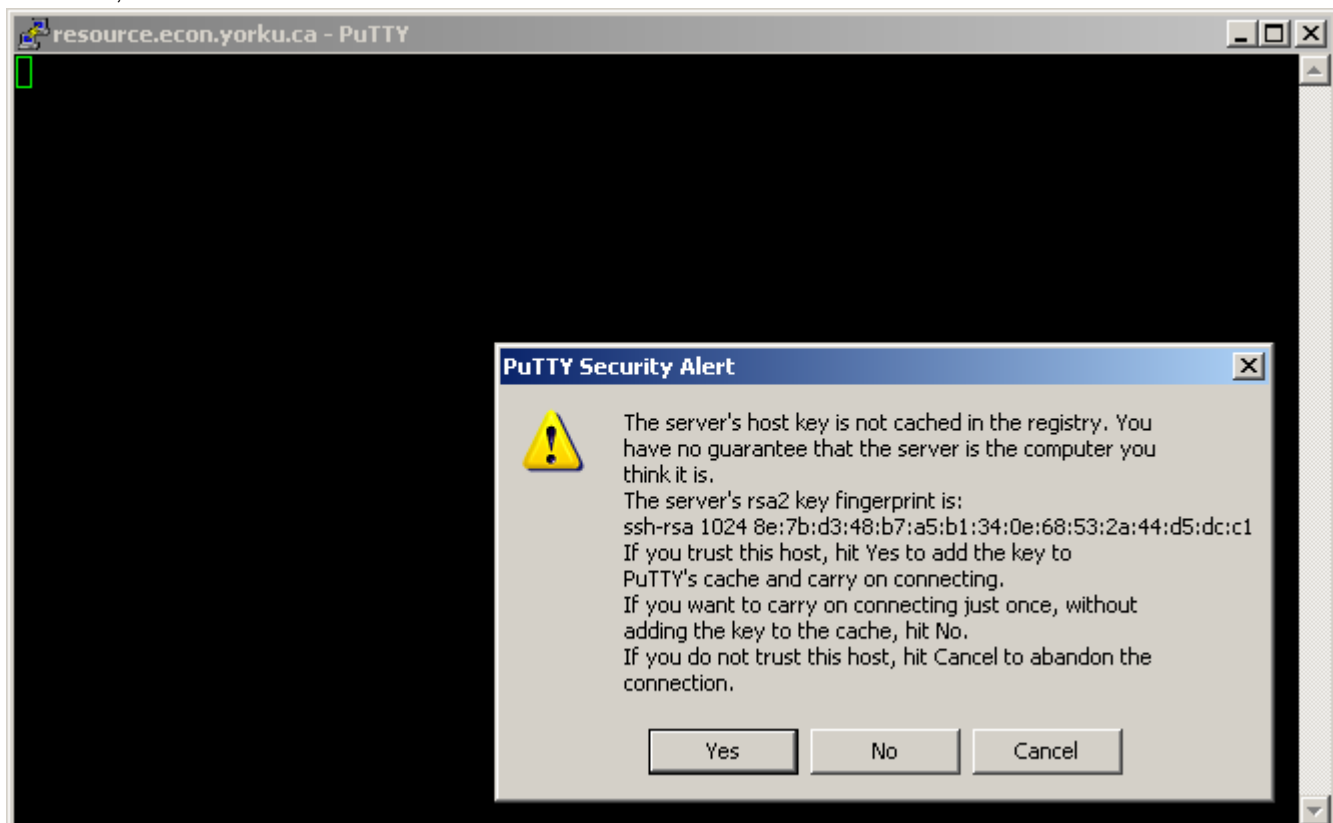
Putty >> Category >> Connection >> SSH >> X11 >> Enable X11



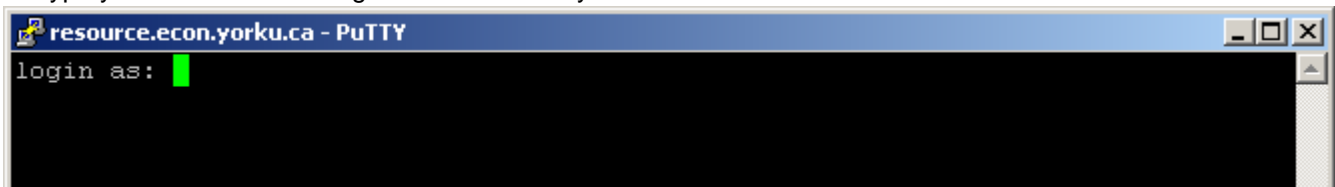
2. Navigate to Putty >> Category >> Session and ensure:
Host Name (or IP address): **resource.econ.yorku.ca**
Port: **22**
Connection type: **SSH**.
Click on Open to connect to the remote server.



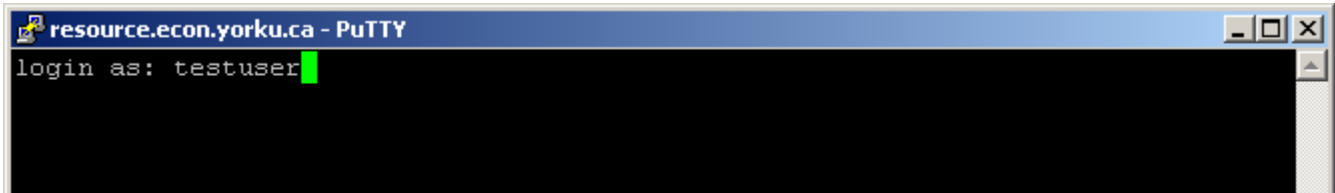
3. If this is your first time connecting to the server from this workstation, you will be presented with a **Security Alert** similar to the one below, Click **Yes**.



4. Type your **username** for login as: hit enter key.

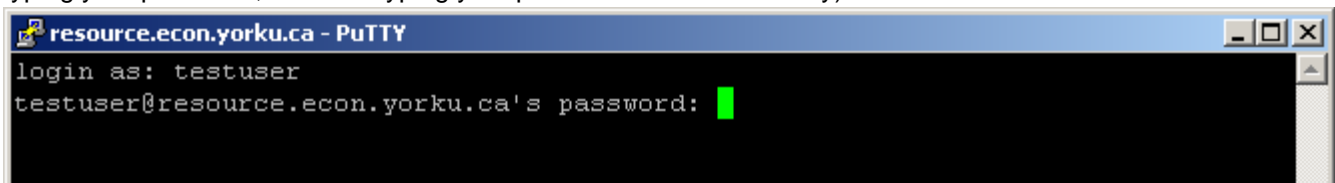


```
resource.econ.yorku.ca - PuTTY
login as: █
```

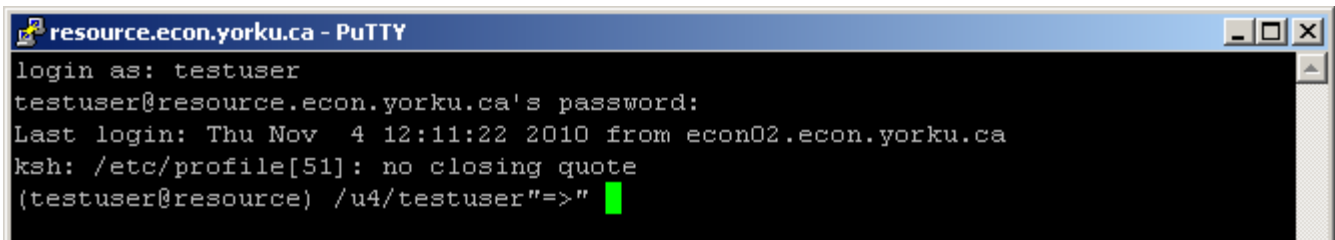


```
resource.econ.yorku.ca - PuTTY
login as: testuser█
```

5. A password prompt appears type your password and hit enter. (Note: No characters may show when you are typing your password, continue typing your password and hit enter key)

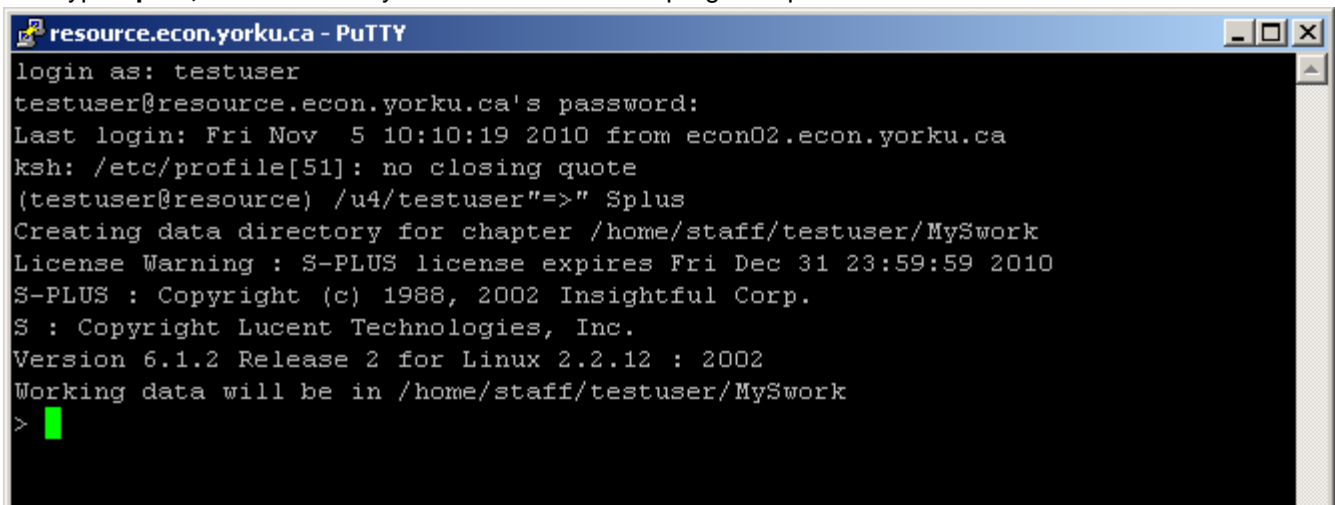


```
resource.econ.yorku.ca - PuTTY
login as: testuser
testuser@resource.econ.yorku.ca's password: █
```



```
resource.econ.yorku.ca - PuTTY
login as: testuser
testuser@resource.econ.yorku.ca's password:
Last login: Thu Nov  4 12:11:22 2010 from econ02.econ.yorku.ca
ksh: /etc/profile[51]: no closing quote
(testuser@resource) /u4/testuser"=>" █
```

6. Type **Splus**, hit the enter key and wait a little as the program opens.



```
resource.econ.yorku.ca - PuTTY
login as: testuser
testuser@resource.econ.yorku.ca's password:
Last login: Fri Nov  5 10:10:19 2010 from econ02.econ.yorku.ca
ksh: /etc/profile[51]: no closing quote
(testuser@resource) /u4/testuser"=>" Splus
Creating data directory for chapter /home/staff/testuser/MySwork
License Warning : S-PLUS license expires Fri Dec 31 23:59:59 2010
S-PLUS : Copyright (c) 1988, 2002 Insightful Corp.
S : Copyright Lucent Technologies, Inc.
Version 6.1.2 Release 2 for Linux 2.2.12 : 2002
Working data will be in /home/staff/testuser/MySwork
> █
```