

How to Run STATA on Undergraduate Lab Computers

This document will explain step by step parts to access and run **stata** program.

Guide:

1. Login to one of Economics Undergraduate lab computers:

In order to login into undergrad labs you require a username and password:

Username: same as your Acadlabs username.

Password: same as your student number. No space or dashes

2. Run putty

Stata program is not located on the local computer but on a server. Therefore you need to use putty to gain access to the server. Locate and run putty from the desktop.



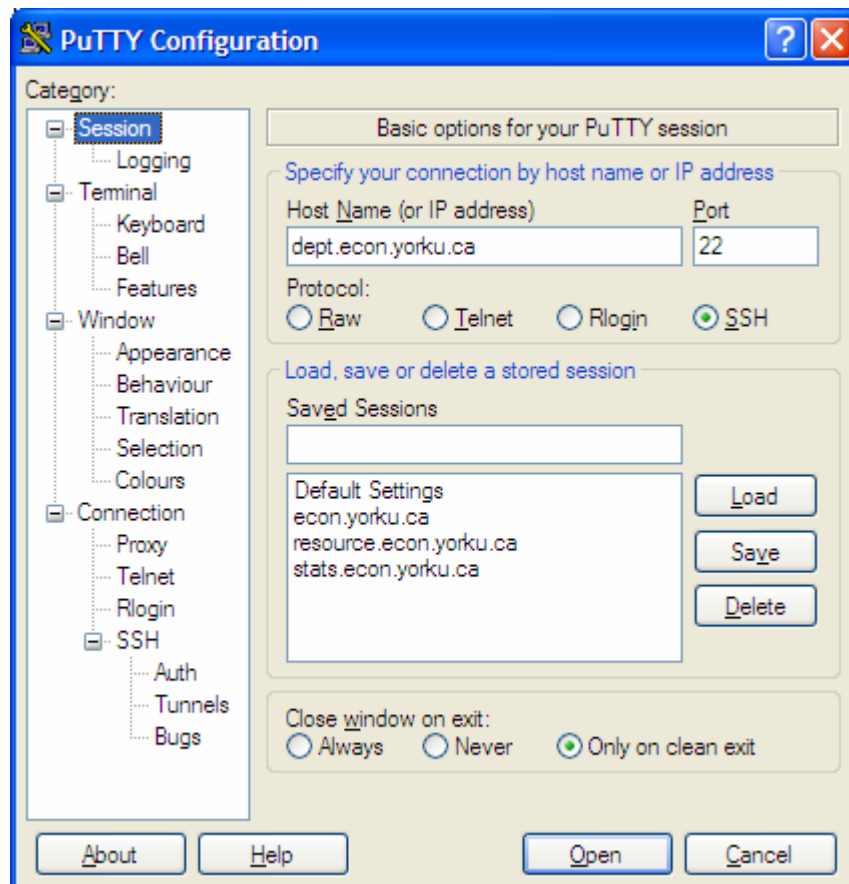
3. Fill in the blank

Set the configuration as follows:

hostname: dept.econ.yorku.ca

port: 22

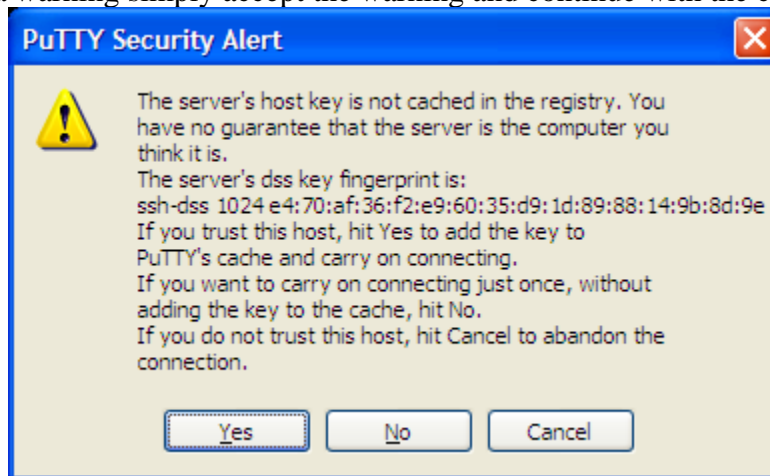
protocol: SSH



Once you filled all configurations press open

3A. Possible security Warning

If you encounter a warning simply accept the warning and continue with the connection.

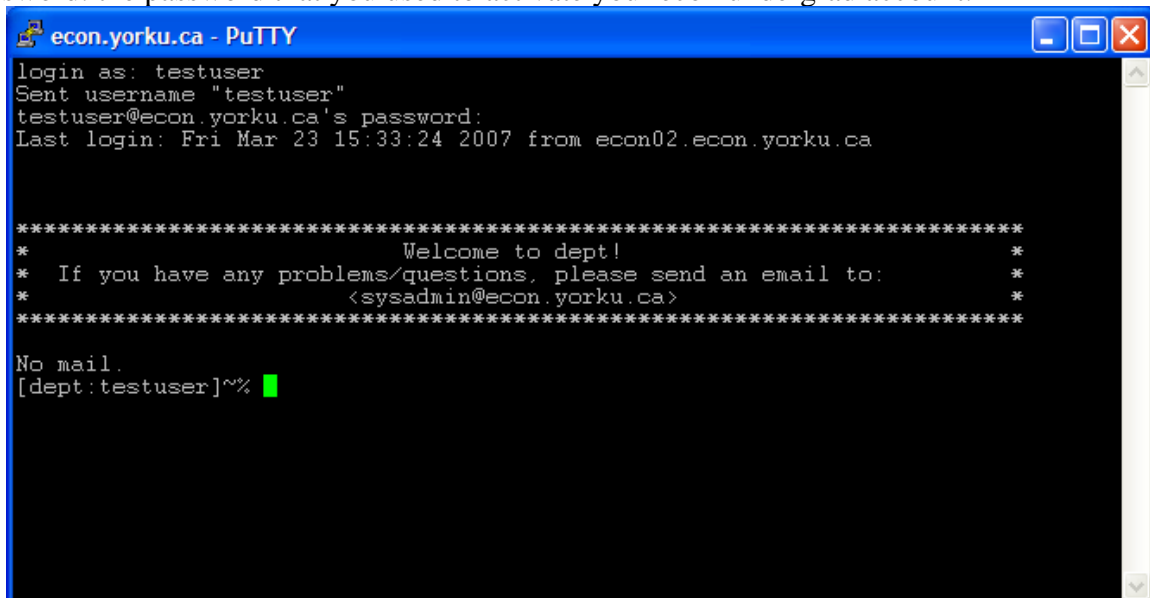


4. Login to the server

In order to access the server you require a different set of usernames and password:

Username: same as your Acadlabs username

Password: the password that you used to activate your econ undergrad account.



5. Run Stata

After successfully logging into the server simply type **stata** and press enter.

```
econ.yorku.ca - PuTTY
bash-2.04$ stata

tm
Statistics/Data Analysis 7.0 Copyright 1984-2001
Stata Corporation
4905 Lakeway Drive
College Station, Texas 77845 USA
800-STATA-PC http://www.stata.com
979-696-4600 stata@stata.com
979-696-4601 (fax)

10-user Stata for IBM RISC (network) perpetual license:
Serial number: 670516935
Licensed to: Department of Economics
York University

Notes:
1. (-m### option) 1.00 MB allocated to data
2. Command line editing enabled
```

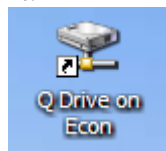
How to upload/download files to/from Stata

In some cases students require to work with data files. As a result you require to access the server for file transfer purposes.

Guide:

1. Access Q drive

Q drive is the drive that provides access to all your files on the server. Find the icon on your desktop and open it by double clicking on it.

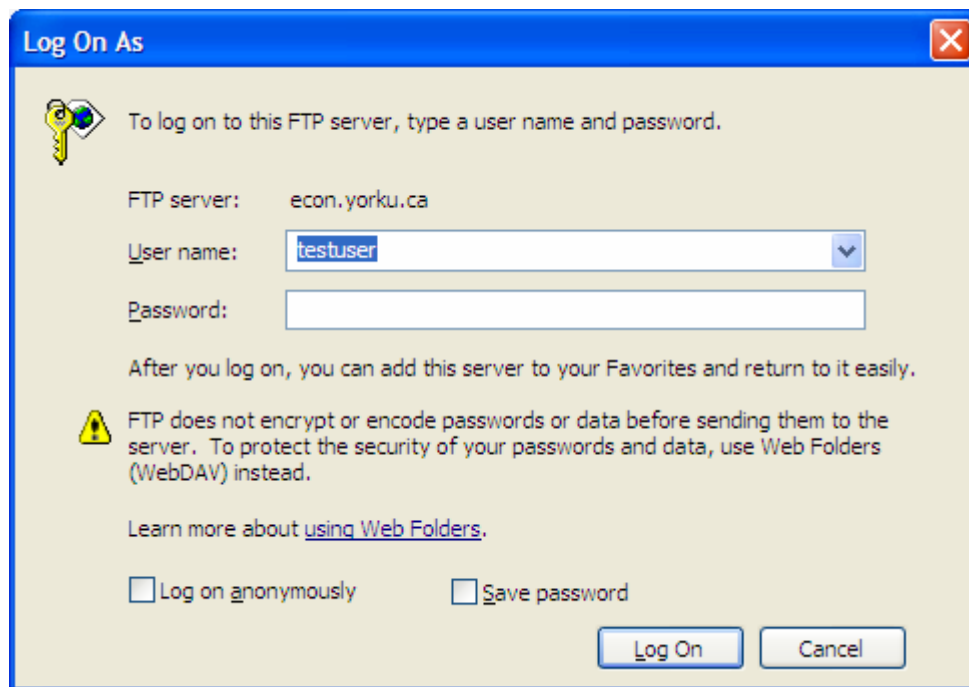


2. Login

Q drive may require to type in username and password:

Username: same as your Acadlabs username

Password: the password that you used to activate your econ undergrad account.



3. DONE

You can now copy and paste files the same way you copy and paste files between the folders of your own computer.