

Running Remote X11 Applications from Windows

One of the nice features of X11 is that you can remotely run X11 applications. To take advantage of this feature we need 2 additional pieces of software.

1. SSH Client

We need a SSH client to tunnel our X11 connection over a secure protocol since X11 transmit in clear-text. We will use Putty as our SSH client, you can download Putty from:

<http://www.putty.org>

2. X-Server

Naturally, we will also need an X-Server to display our X11 applications. For this setup we will use the Xming X-Server. Download Xming X-Server from:

<http://sourceforge.net/projects/xming>

Now assuming Putty and Xming are both installed we can now connect to our remote Unix/Linux server and run a X11 application

1. Double click on the **Xming** shortcut on the desktop (see figure below)

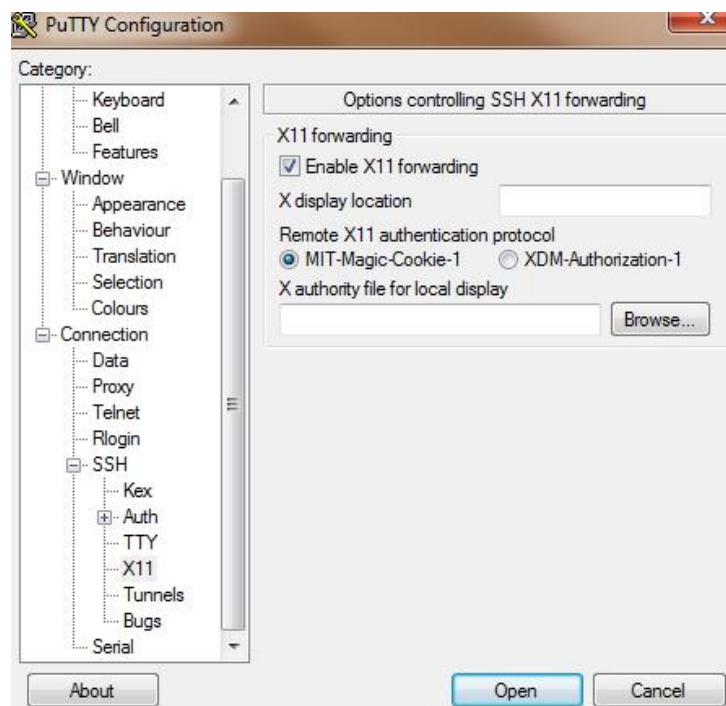


Note: If you have a firewall installed on your computer you will need to allow remote hosts access to the X-server

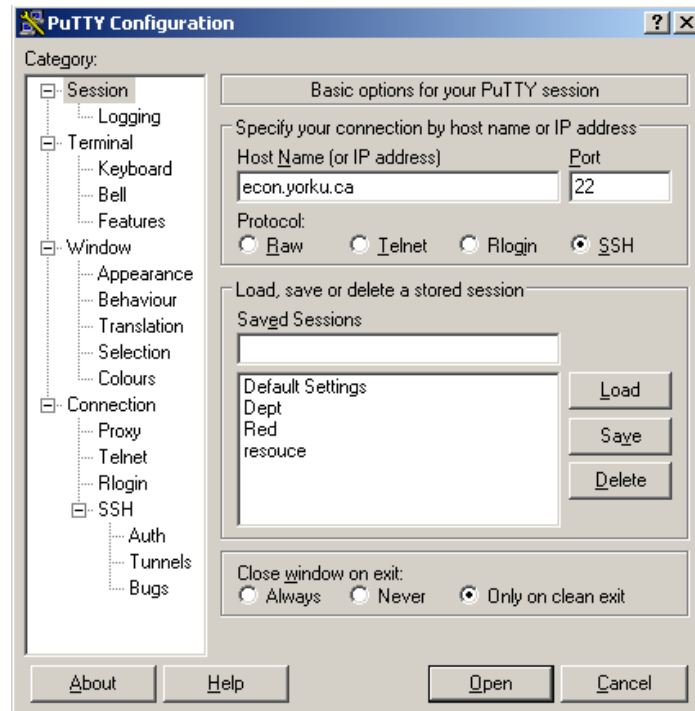
2. After a short while, you will see the **X** logo in the system tray (see figure below)



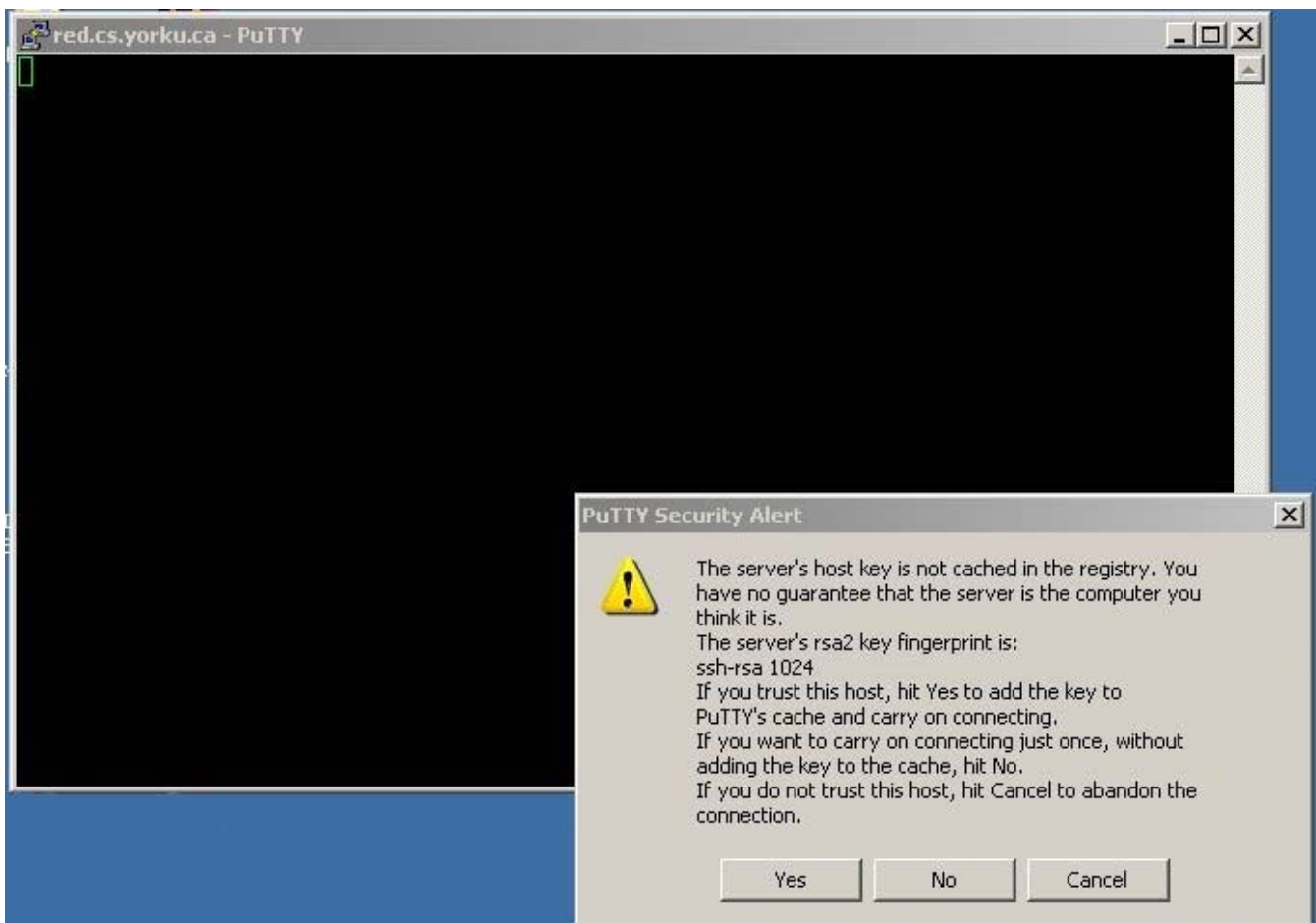
3. Launch **Putty** and enable X11 forwarding by enabling *Enable X11 forwarding* under the Tunnels options. The "Tunnels Options" is located at: "Category" → "Connection" → "SSH" → "X11".



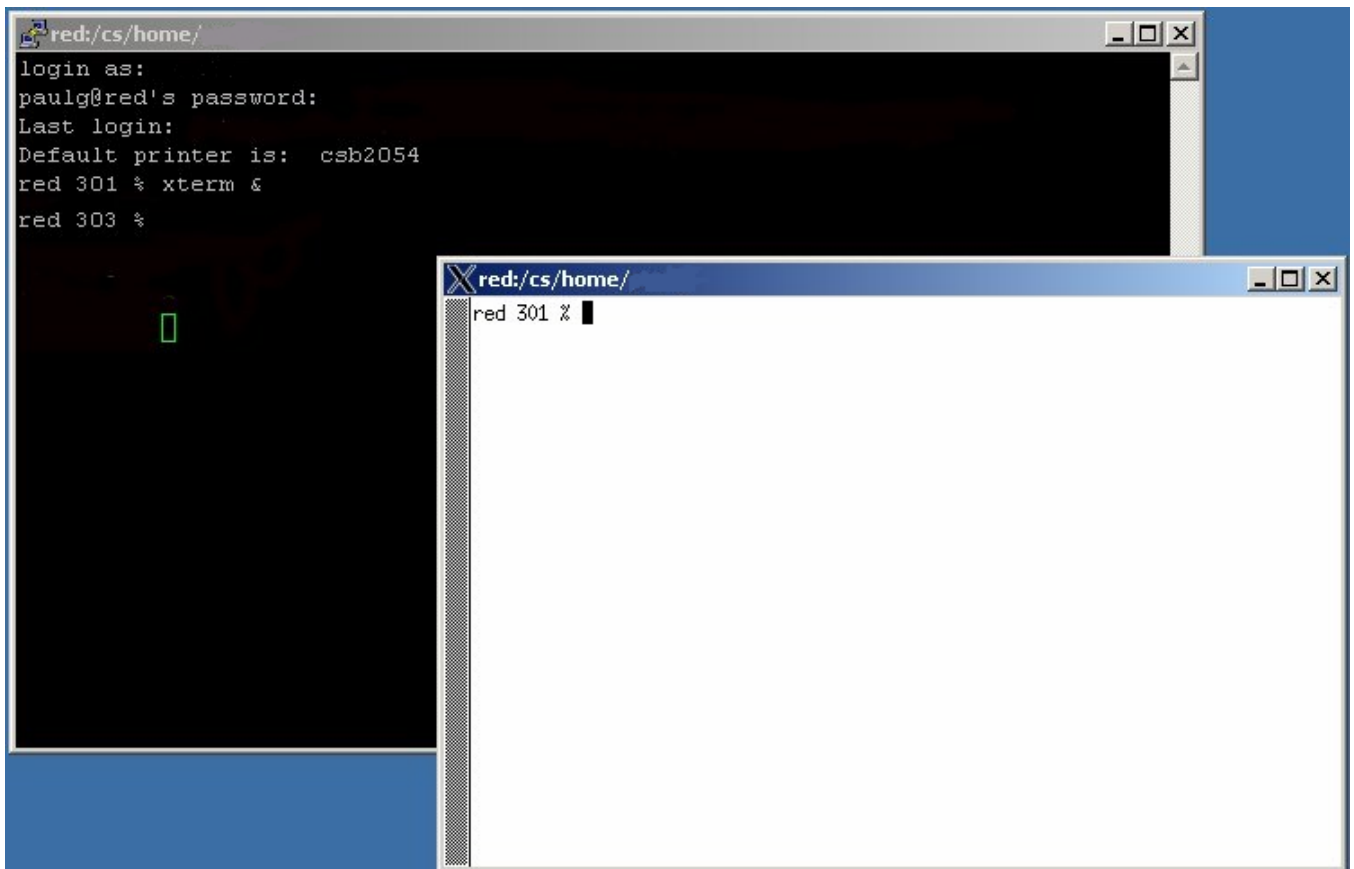
4. Enter the hostname of the server you want to connect to. Click on **Open** to connect to the remote server.



5. If this is your first time connecting to the server from this workstation, you will be presented with a **Security Alert**, Click **Yes** (see figure below)



6. Next login and run an X-11 application. In this example we will run **xterm**.



7. Finally, when you are done close all your X-11 applications and type exit in the PuTTY terminal window to log off the server.