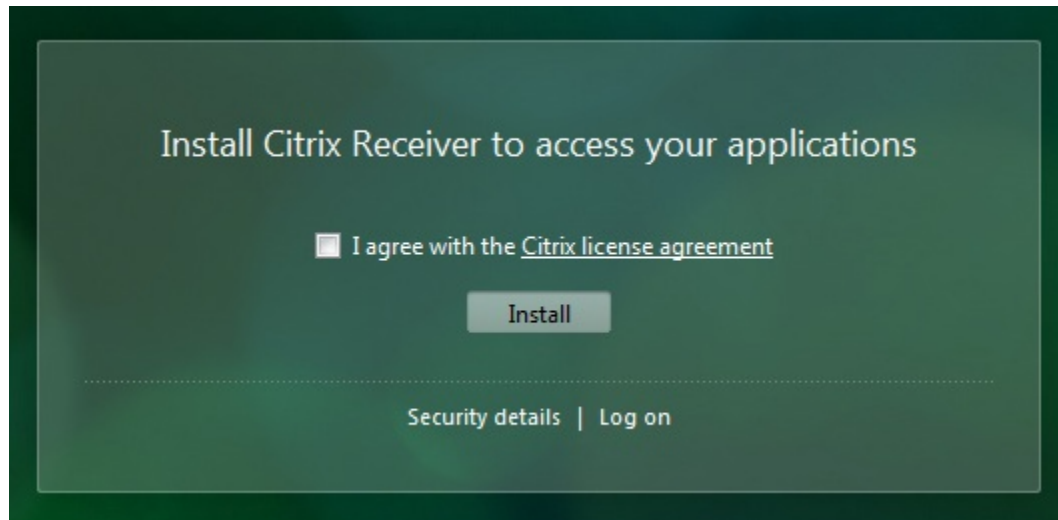
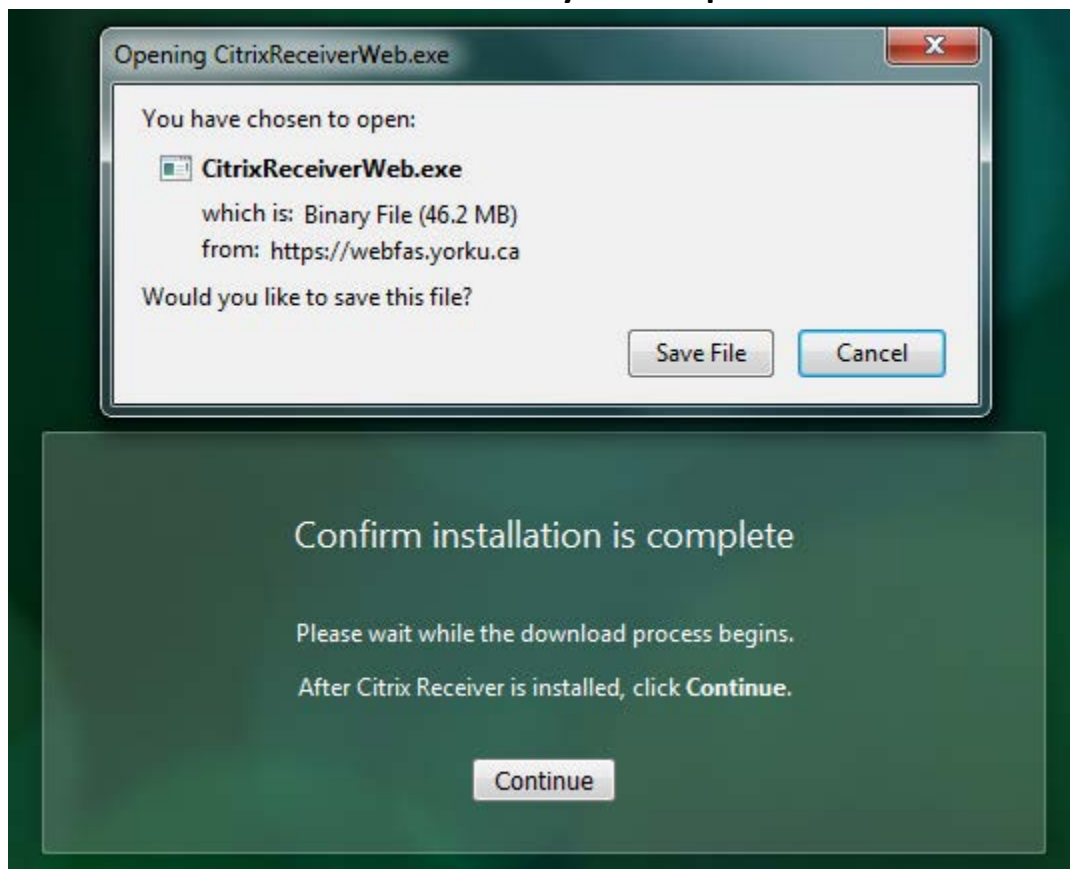


SAS GUIDE FOR ECONOMICS DEPARTMENT

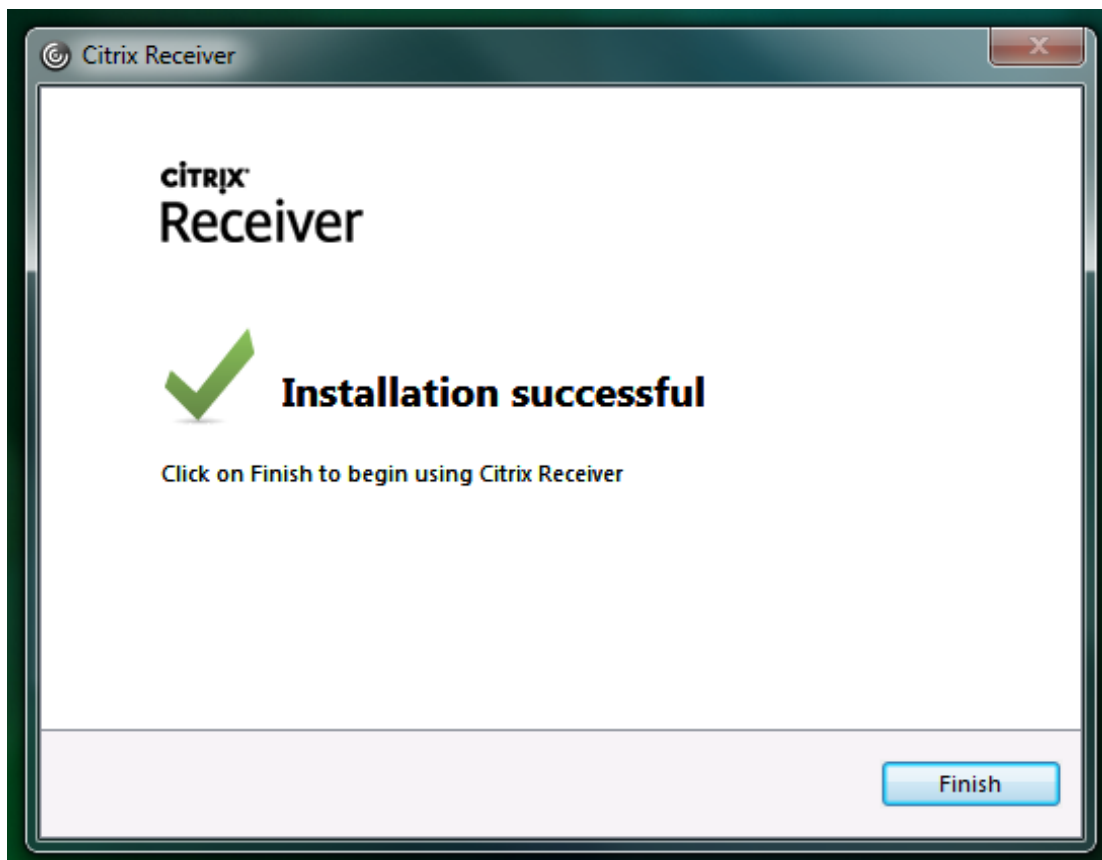
1. To use SAS from anywhere visit the link below and login using your passport York: <https://webfas.yorku.ca/Citrix/WEBFASWeb/>
2. Before you see the login screen, you will be asked to install a plugin called **"Citrix"**.



3. Click **"I agree..."** then **"Install"**.
4. This will download the Citrix Receiver file on to your computer.



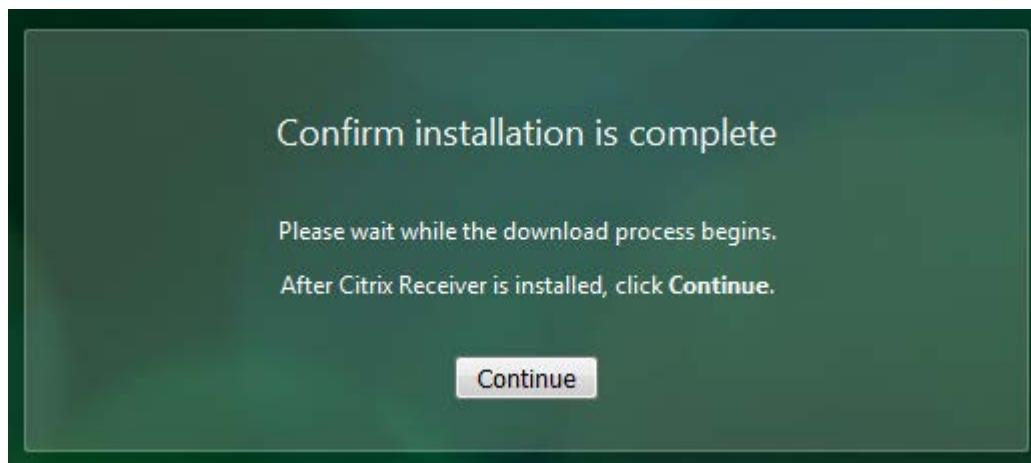
5. Navigate to the location of the file on your computer and then double click on it to install it.
6. Once installation is completed...



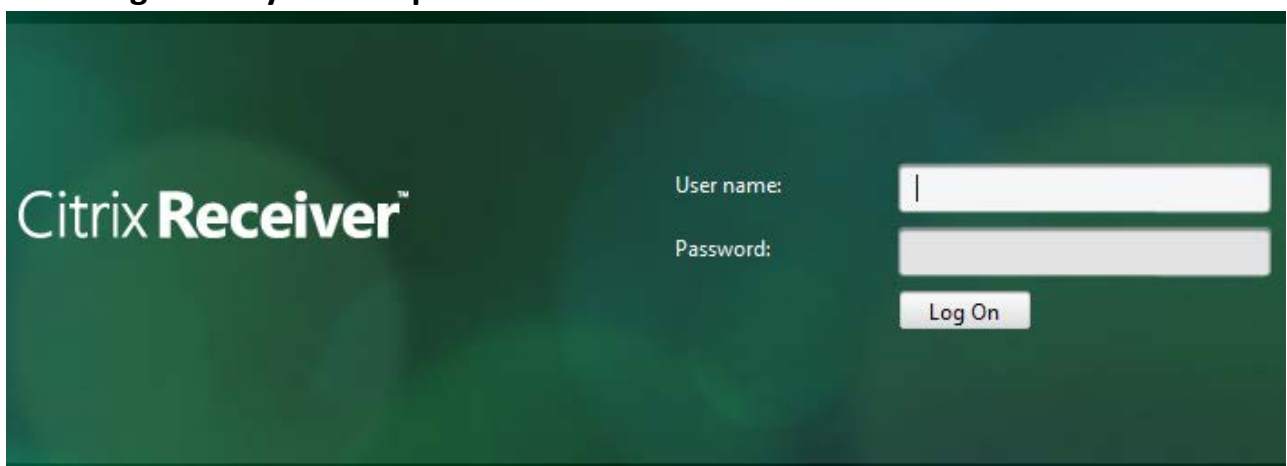
7. You will get a notification by your browser asking if it can use Citrix Receiver, Click **"Allow"**.



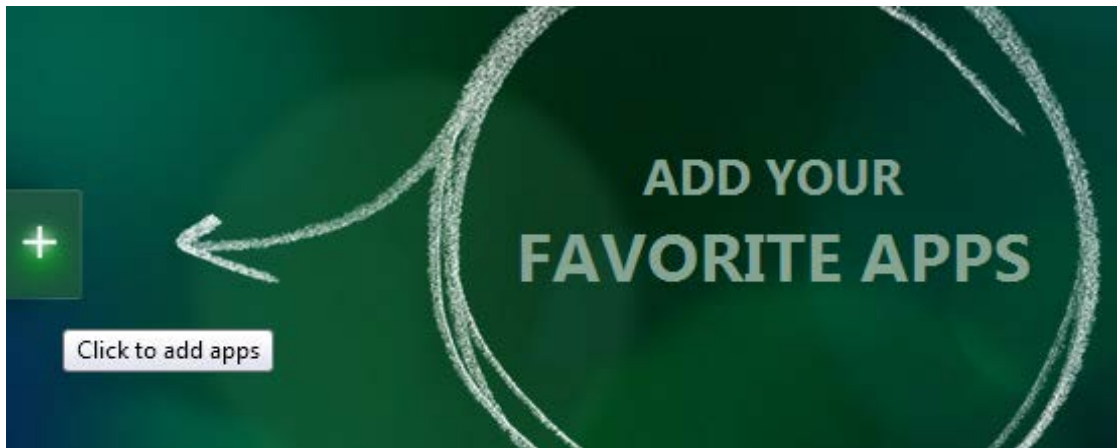
8. Then click **"Continue"**.



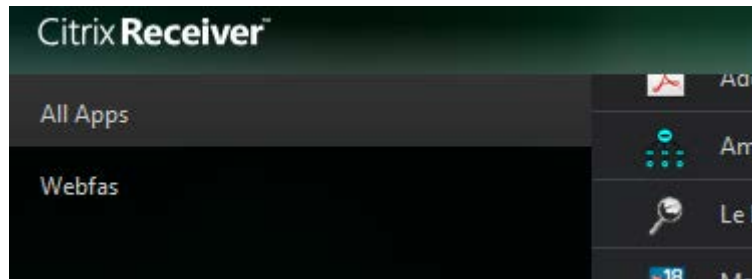
9. Proceed to login with your Passport York Account:



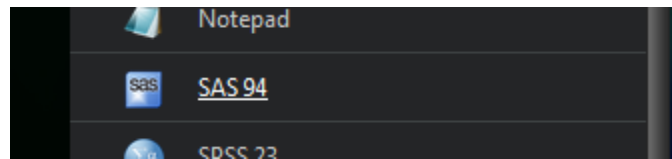
10. Click the **“Plus Sign”** on the left to add Apps to the Citrix Desktop.



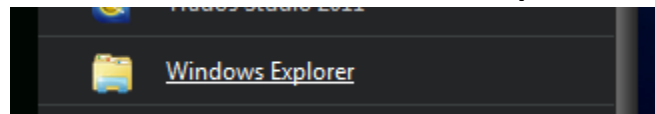
11. You will need to add two Apps, Click on **“All Apps”**.



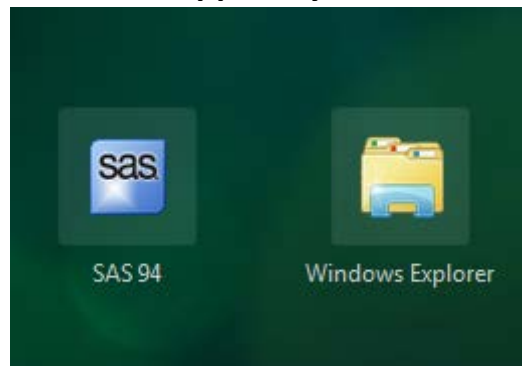
12. Then add **“SAS 94”**.



13. Click on the Plus sign again and this time add Windows Explorer.

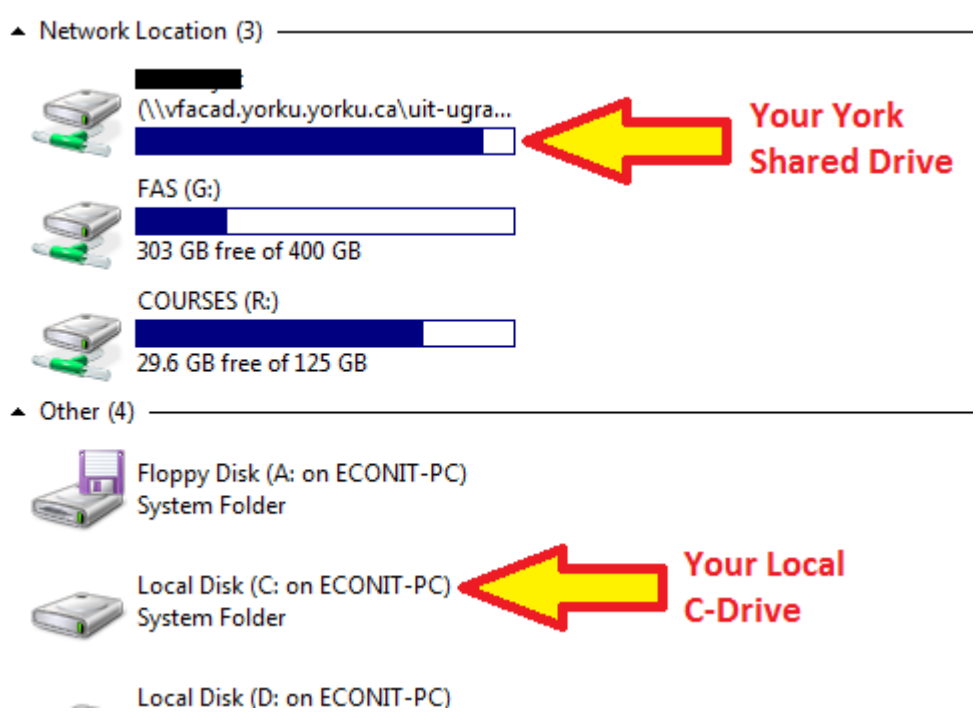


14. Now you should have the icons of both Apps on your Citrix desktop.



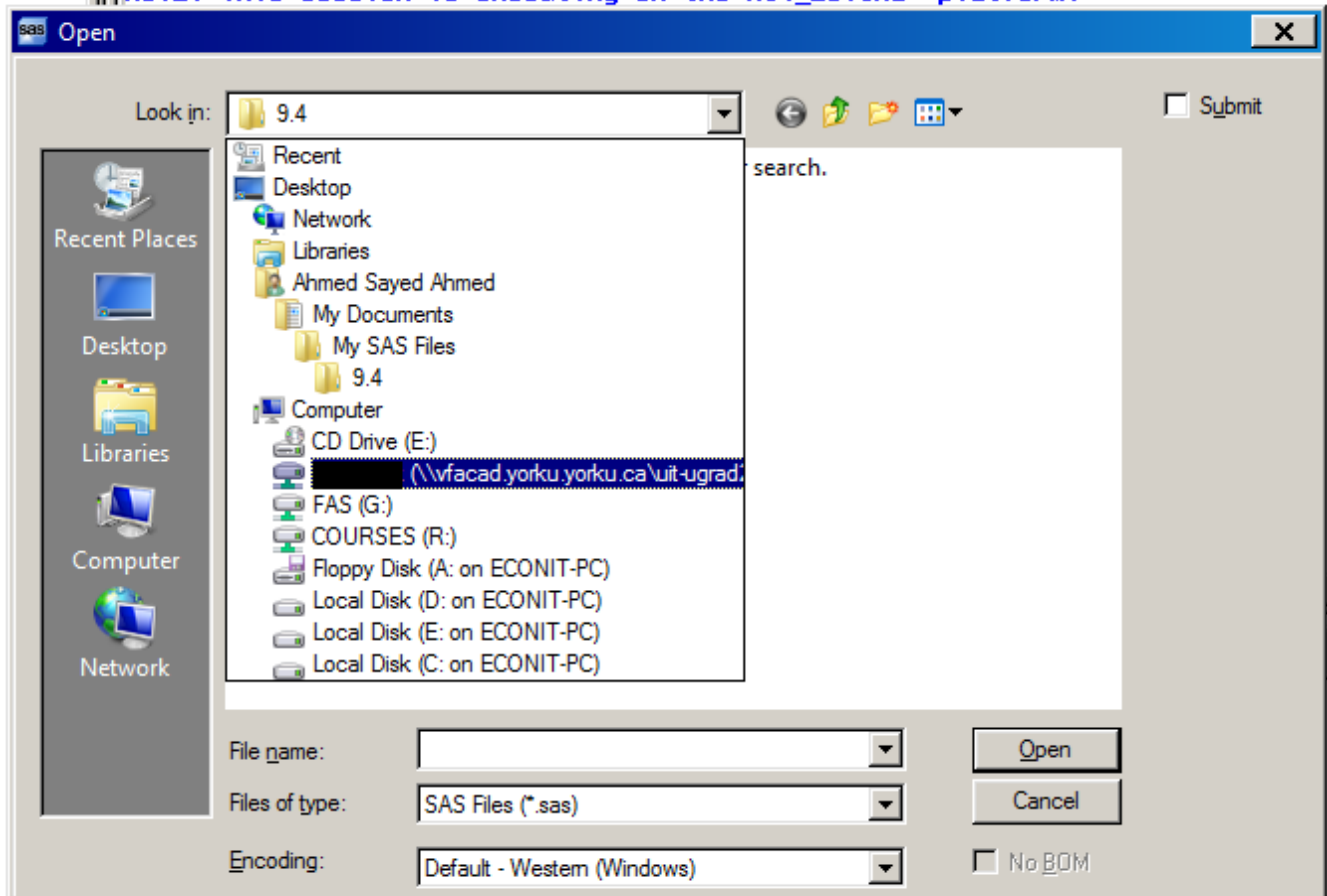
15. This Windows Explorer is not your local Windows Explorer found on your computer but it functions the same. The idea is to transfer files between the York server and your local computer using Windows Explorer because this will allow SAS 94 to read those files from the server.

16. Click on **“Windows Explorer”** and wait for it to load.



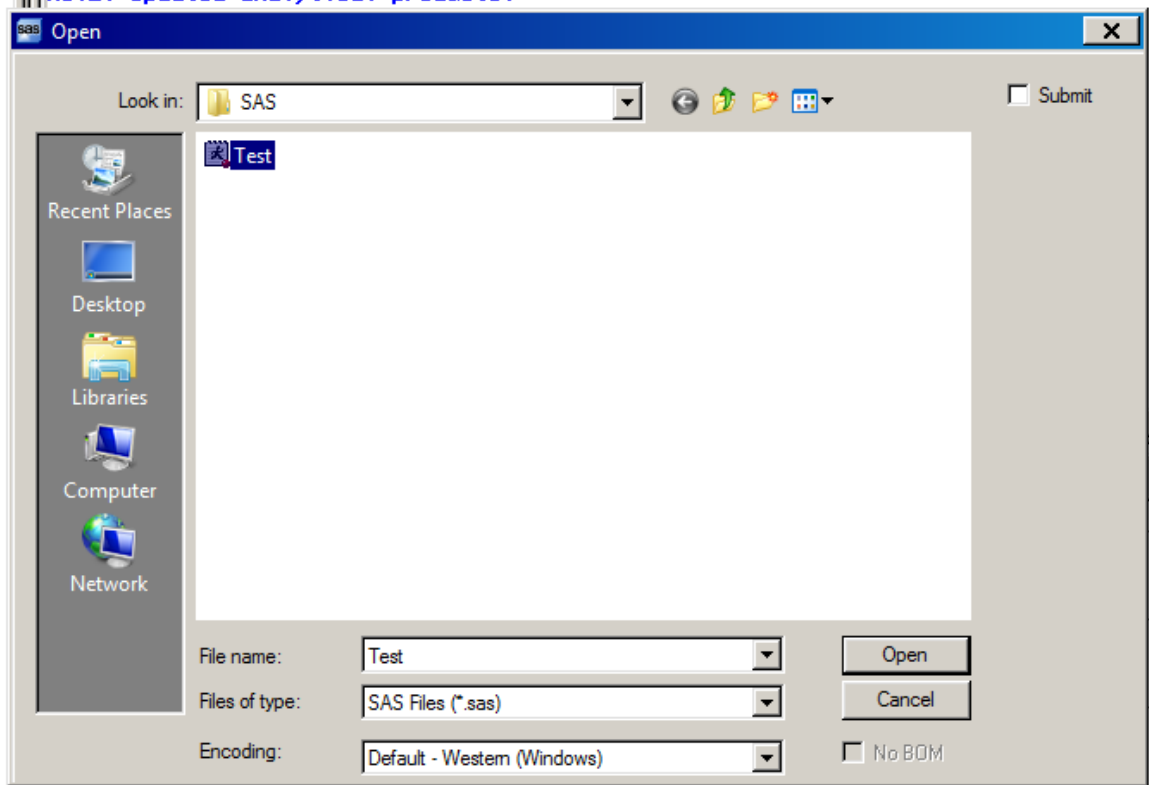
17. You can transfer your SAS files between your local drive and your network drive and once you load up "SAS 94" and go to (File → Open) you will be able to see those files either from your local drive or your Network Drive.

NOTE: This session is executing on the X64_ES08R2 platform.

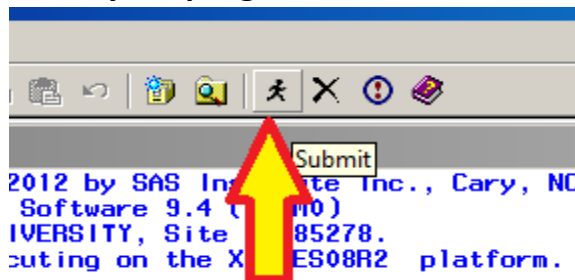


18. Choose the SAS files you would like to load and click open.

NOTE: ALL .dat FILES MUST BE PLACED ON THE ROOT OF YOUR HOME DIRECTORY NOT UNDER ANY FOLDERS. YOU CAN HAVE A FOLDER ON YOUR ROOT FOR .sas FILES SUCH AS (YOUR HOME DIRECTORY:\\$SAS FOLDER\Test.sas) BUT YOUR .dat FOR THAT FILE MUST BE AT THE PATH (YOUR HOME DIRECTORY:\Test.dat) BECAUSE THAT'S THE PATH THE SERVER USES TO READ .dat FILES EVEN THOUGH INSIDE Test.sas THE PATH TO THE DATA FILE IS "infile 'Test.dat';".



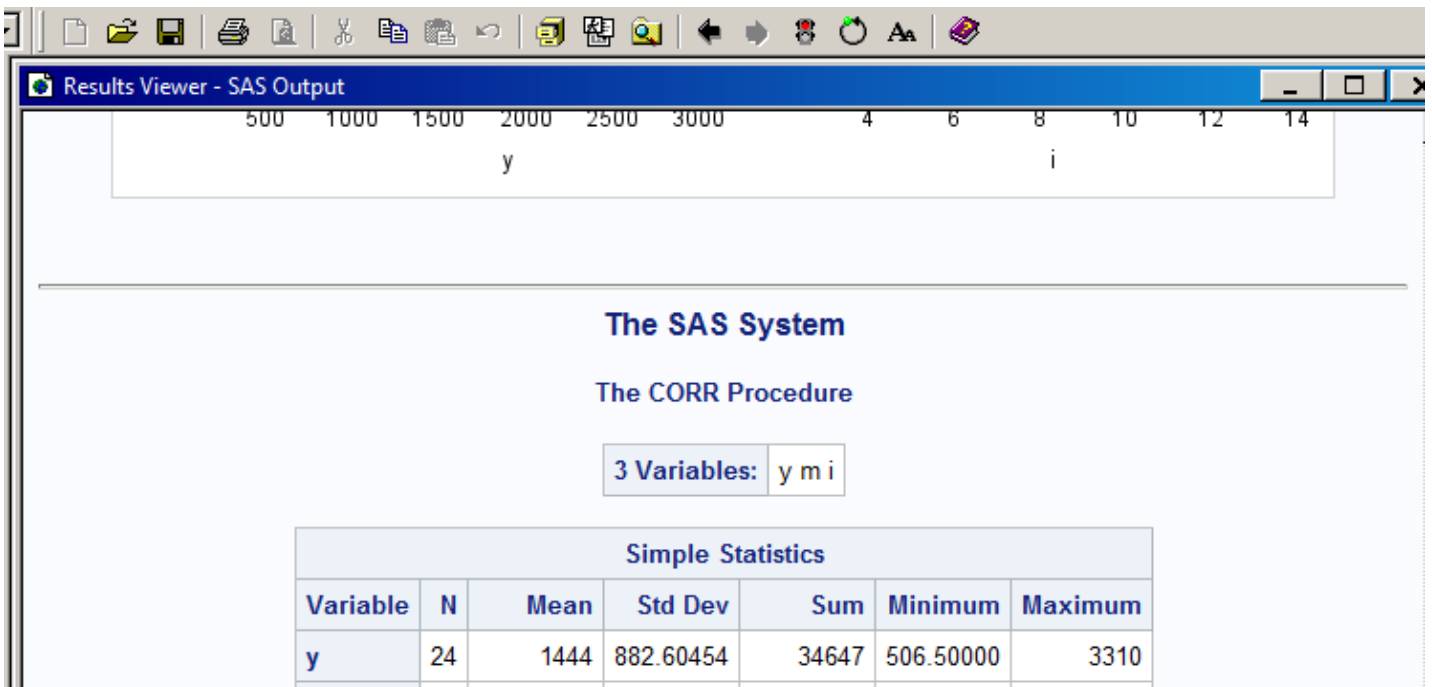
19. Click the **“Submit”** icon to submit your program and run it.



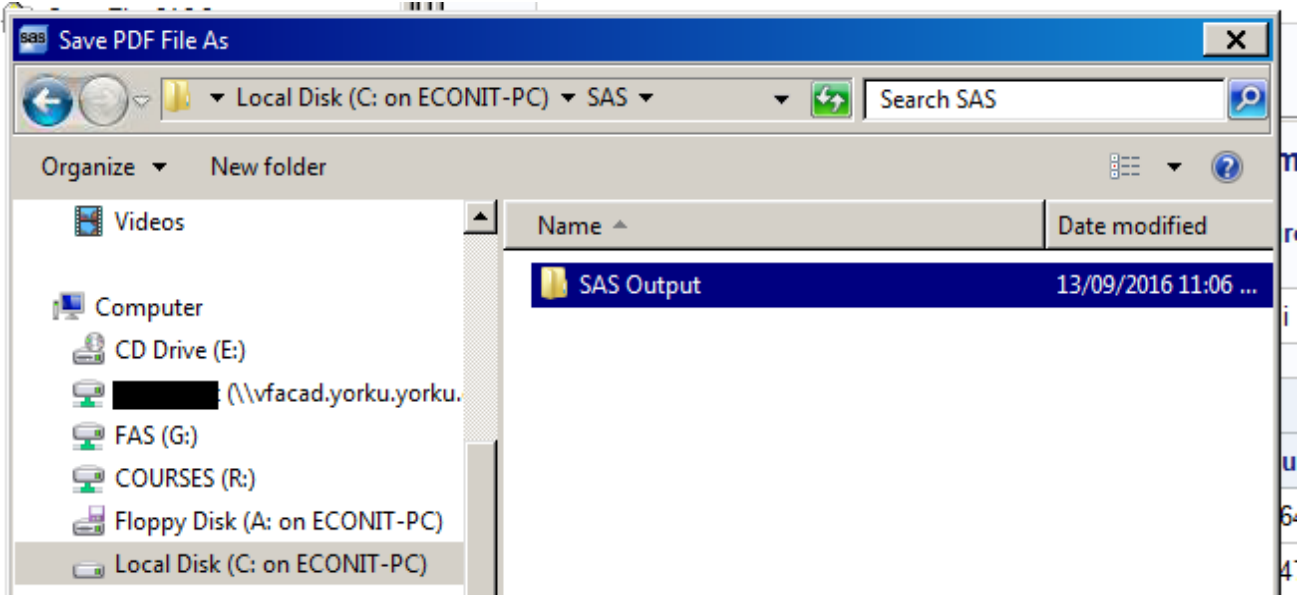
Click to Submit and Run

products:

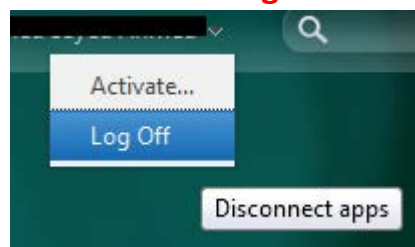
20. If your program runs successfully without any errors you will be able to see the results in the SAS Output window.



21. To save your results in PDF format go to **(File → Print → Adobe PDF → Print)** then choose a location to save your file, this could be locally on your C-Drive or on your York Network Drive.



22. Once you are done, close both windows for SAS 94 and Windows Explorer then click on your name in the browser within Citrix and choose **“Log Off”**.



That's it!